

# Saloteam

## **Saloteam Oy CNC high-precision machining services**

- We mainly machine parts weighing less than 20 kg, but depending on the dimensions and materials, we can also handle larger parts.
- Our primary raw material is aluminium, but we also machine a lot of steel and other metals, as well as hard plastics and composites.
- With 12 modern CNC machines, we produce turned and milled parts quickly and to a high quality.
- Our versatile machinery allows for flexible batch sizes, ranging from a few parts to hundreds of pieces.
- We serve high-tech industrial clients with over 30 years of experience, supported by a team of 30 professionals.

# Material in our warehouse

The most common material we machine is aluminium, which we store in the form of sheets, rods, and tubes, mainly in types 5083, 6026, 6082, and 7075.

We stock structural steel quality S355 and stainless steel grades EN 1.4305, 1.4301, 1.4404, and 1.4021 (AISI 303, 304, 316, and 420).

In terms of plastics, the most commonly machined and stocked material is POM, available in both standard and ESD-compatible versions. The domestic D-Rim is also an ESD-safe option, which we stock in plates of 20-, 30-, and 60 mm thickness. Other plastic materials we stock include polyethylene, polycarbonate, and acrylic.

Copper and brass are also materials that we machine often.

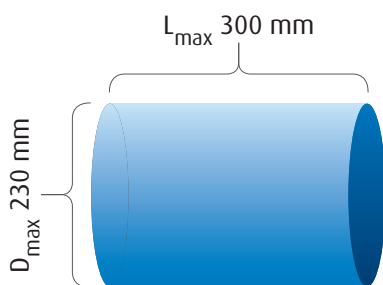
If the required materials are not immediately available on our shelf, generally available grades can usually be sourced with a delivery time of 1-2 weeks.

## Maximum sizes of machined parts

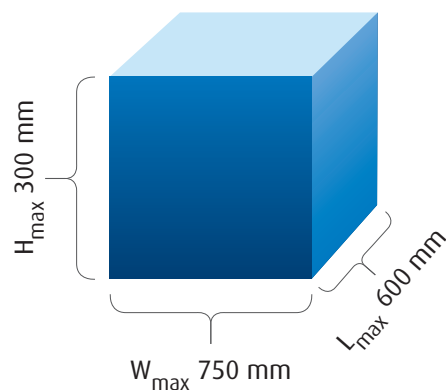
Different machines can accommodate pieces of slightly different sizes, and the maximum dimensions are provided on the machine-specific pages later in this document. For example, our Kimla routing machine can handle a sheet blank that is 3000 x 1500 x 60 mm in size.

Below you can see the maximum sizes of the workpieces that can be turned and milled at Saloteam. In practice, the maximum size of the workpiece is the sum of several factors, meaning that a slight excess in the mentioned dimensions does not necessarily prevent the machining of the part with us.

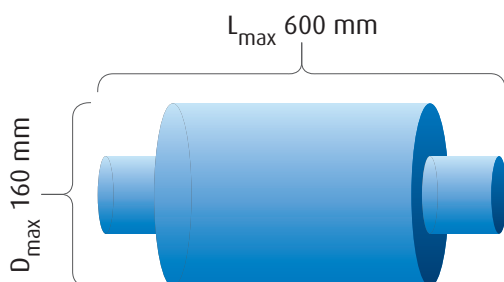
### Turned parts



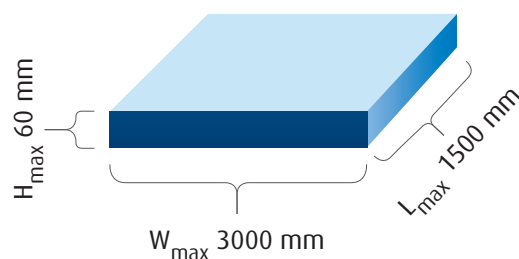
### Milled parts



### Parts turned only on the outer surface



### Milled thin items

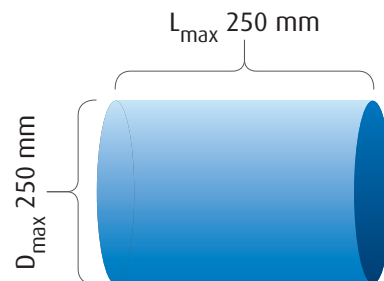


# Lathes



## Mori Seiki NT1000

5-axis lathe with bar feeder



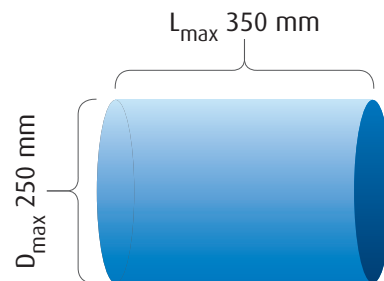
(max. rotating diameter 340 mm)

- Bar feeder max. diameter 50 mm
- Turning and 5-axis machining



## CMZ TA25YS

Lathe with a Y-axis, tailstock and bar feeder

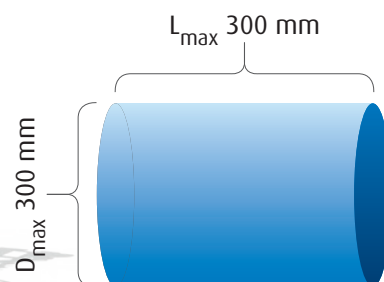


- Bar feeder max. diameter 60 mm



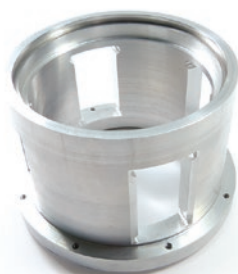
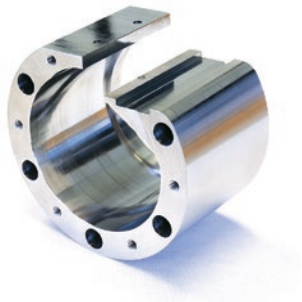
## Nakamura-Tome NTRX-300 with Cello Xcelerate X20 automation

5-axis lathe



- Automation enables long cycles of unmanned operation.

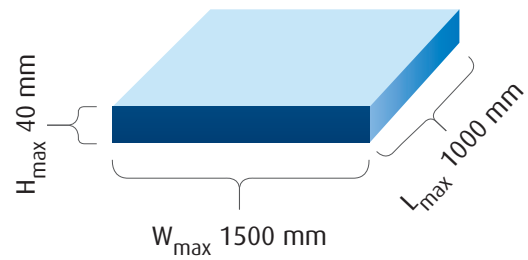
# Examples of CNC-turned parts



# Vacuum-table 3-axis routers for plates



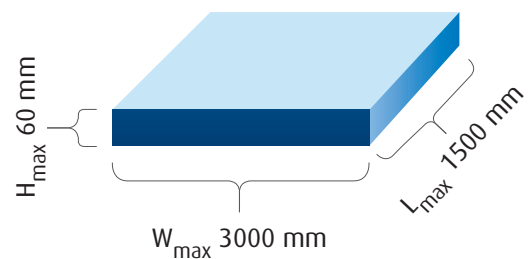
Datron MLCube LS  
Datron ML1500-2C



- max. thickness of parts
  - metal 30 mm
  - plastic 40 mm
- aluminium, plastics



Kimla PPF1731



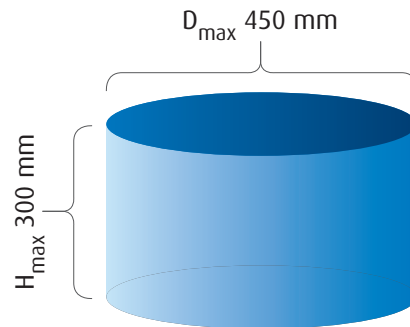
- large vacuum table
- 16 kW spindle power

# Machines equipped with workpiece changer



## Makino DA300 19 WPS

5-axis machining center with pallet changer



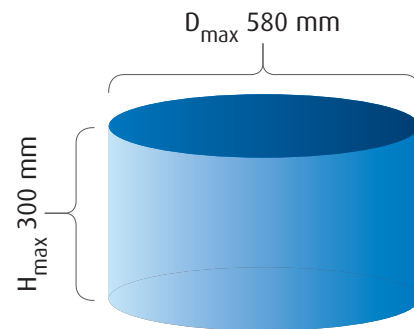
- 19x pallet changer, pallet size 355 x 355 mm





## DMG ecoMill 70

3 + 2 -axis machining center

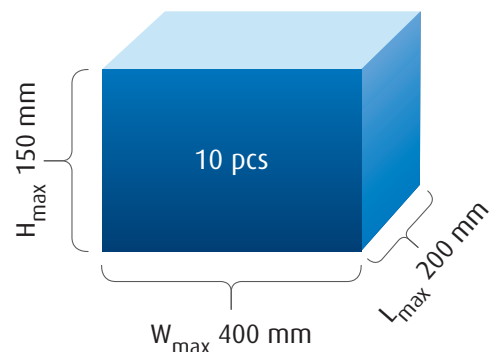
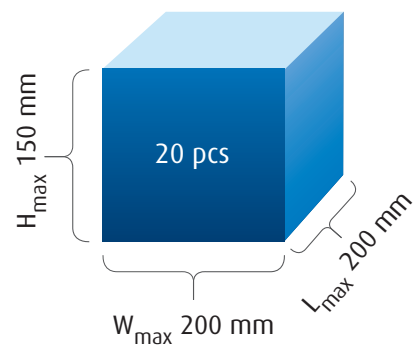


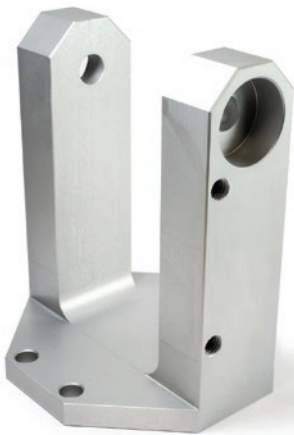
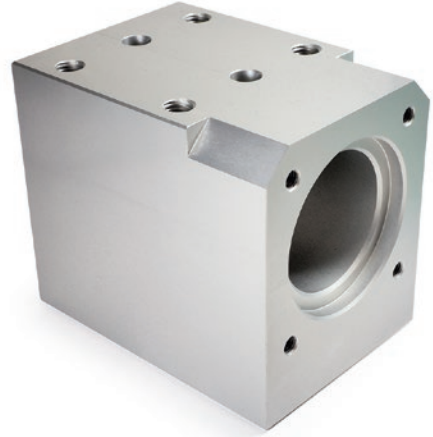
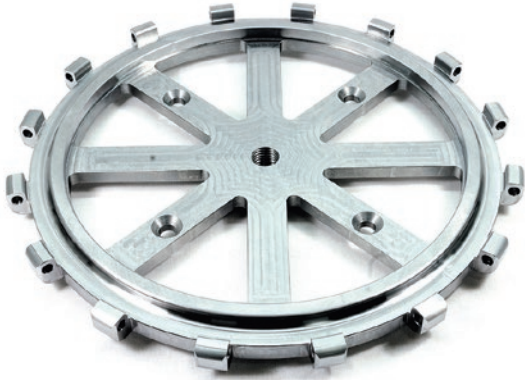
- workpiece up to 700 x 600 mm (restrictions apply)



## Lang Technik Eco-Compact 20

Automatic loader/unloader, used with ecoMill machining center



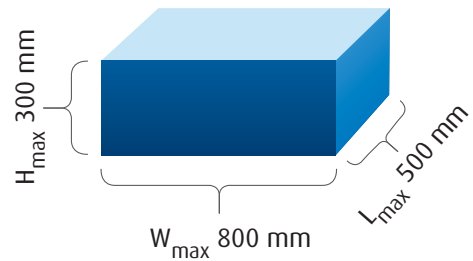




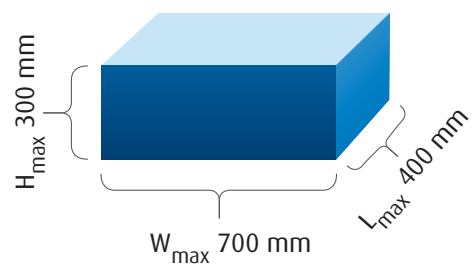
# Vertical machining centers



**Mori Seiki NV5000**  
**Vertical machining center**



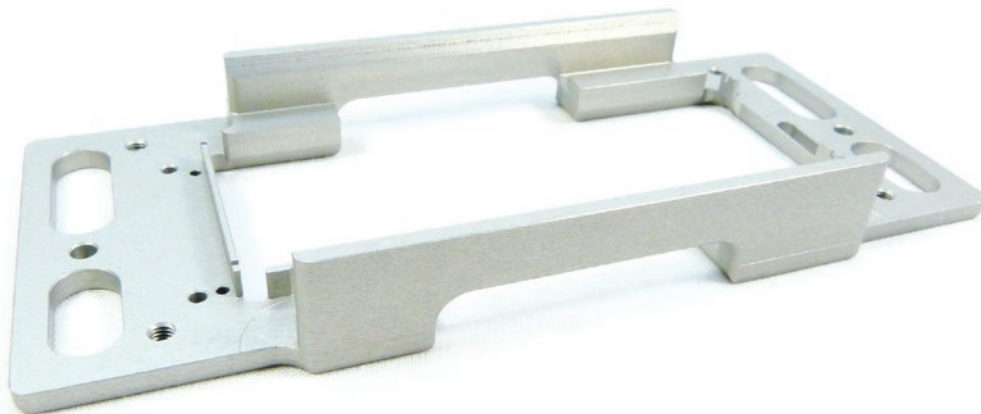
**FANUC ROBODRILL**  
**Vertical machining center**



- Saloteam has 3 pcs of these

# Parts we have machined with the vertical machining centres

---



# Saws



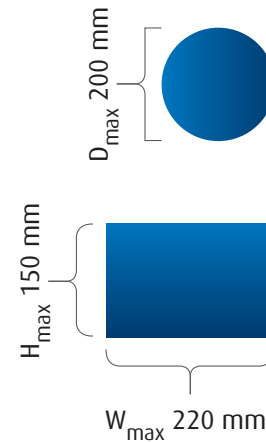
## Altendorf F45



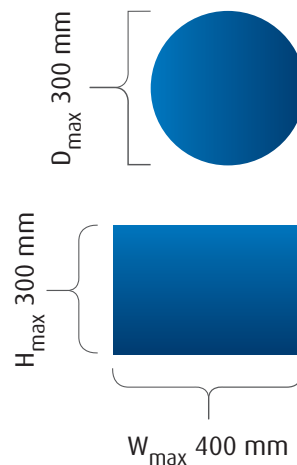
- Aluminium, plastics, brass



## Emmegi SCA 550



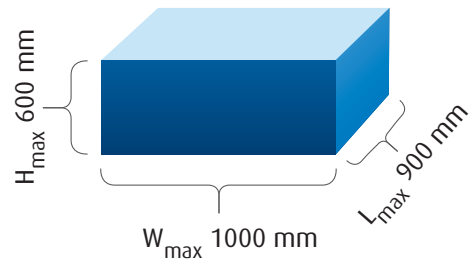
## Cosen SH-4030 band saw



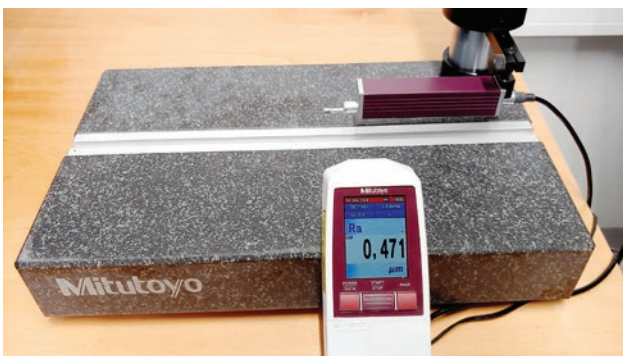
# Test equipment



**Mitutoyo Crysta Apex S 9106**  
**3d coordinate measuring machine**



- 150 mm measuring head included in the dimensions
- Measured part is compared with the original 3d model
- fast programming
- clear measuring report



**Mitutoyo SurfTest SJ-210**  
**Surface roughness tester**

# Saloteam